

## Prilog 3

---

Živčić, Juraj

### Supplement / Prilog

Publication year / Godina izdavanja: **2016**

Permanent link / Trajna poveznica: <https://urn.nsk.hr/urn:nbn:hr:128:238788>

Rights / Prava: [In copyright](#) / [Zaštićeno autorskim pravom](#).

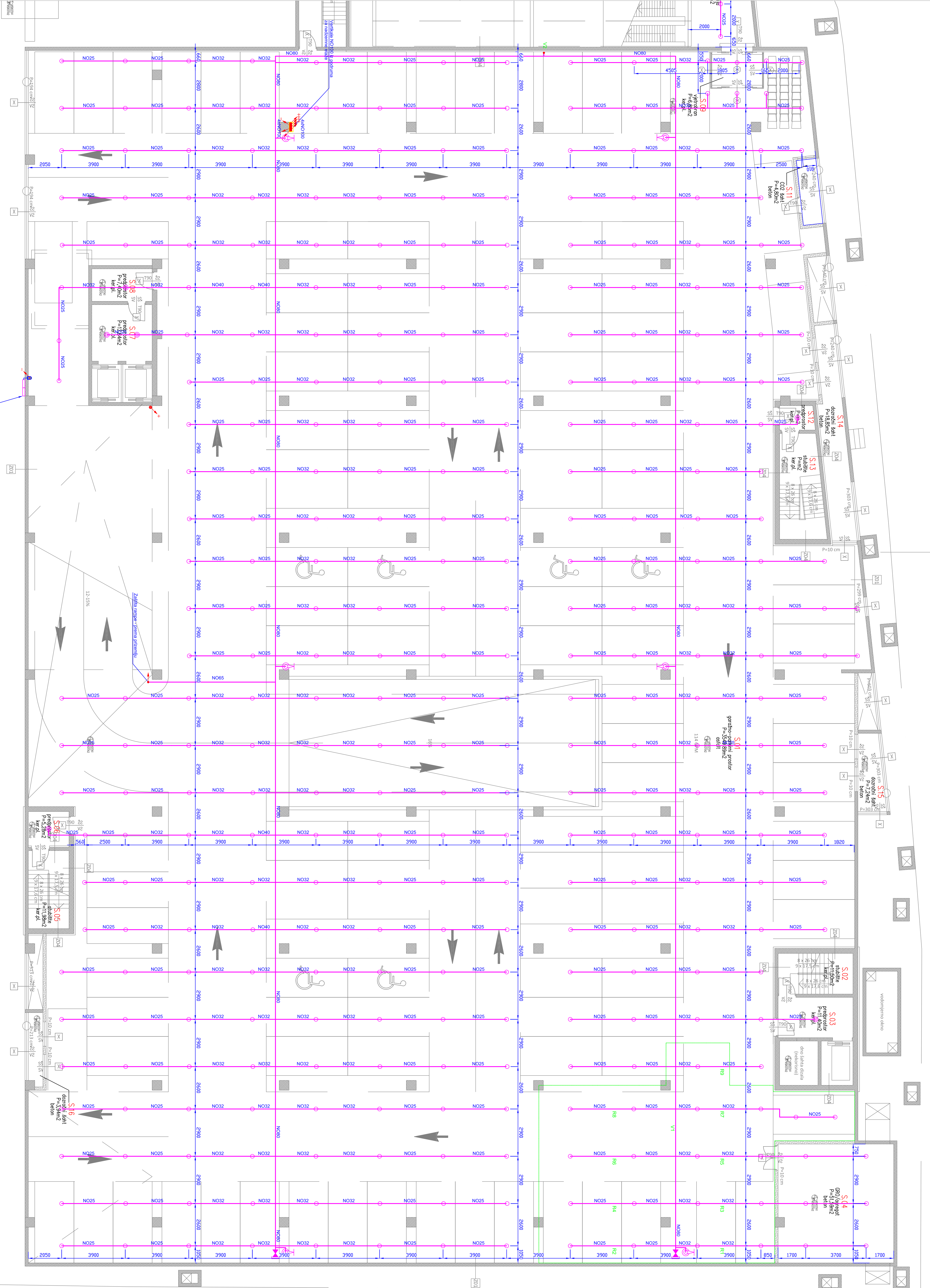
Download date / Datum preuzimanja: **2024-09-06**



**VELEUČILIŠTE U KARLOVCU**  
Karlovac University of Applied Sciences

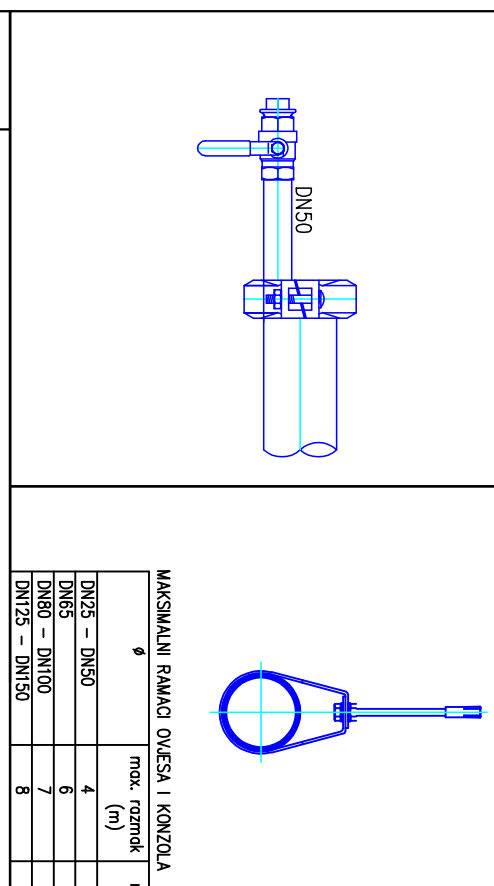
Repository / Repozitorij:

[Repository of Karlovac University of Applied  
Sciences - Institutional Repository](#)

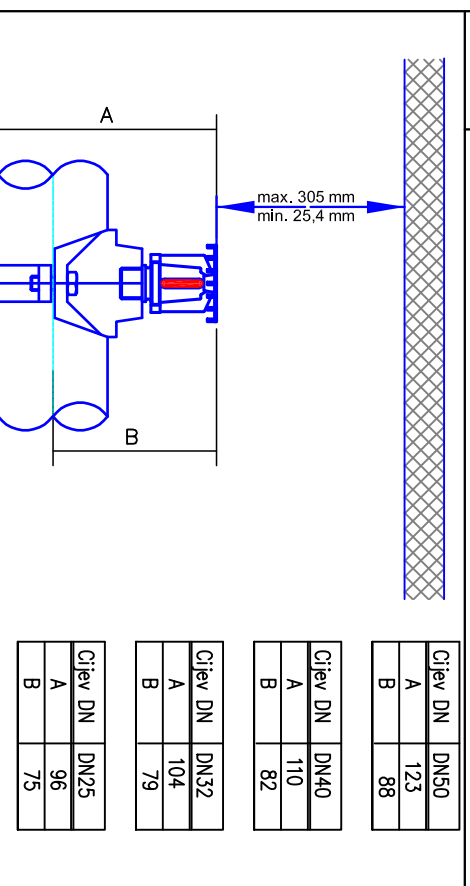


Detalj 1 - Priljučak za sprinkler

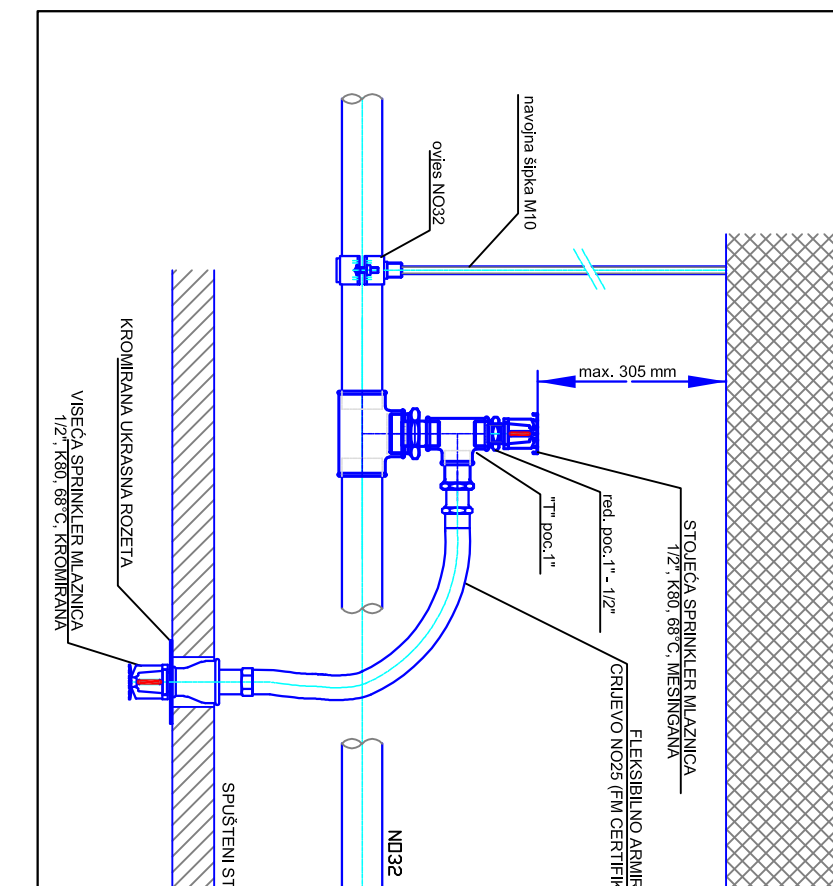
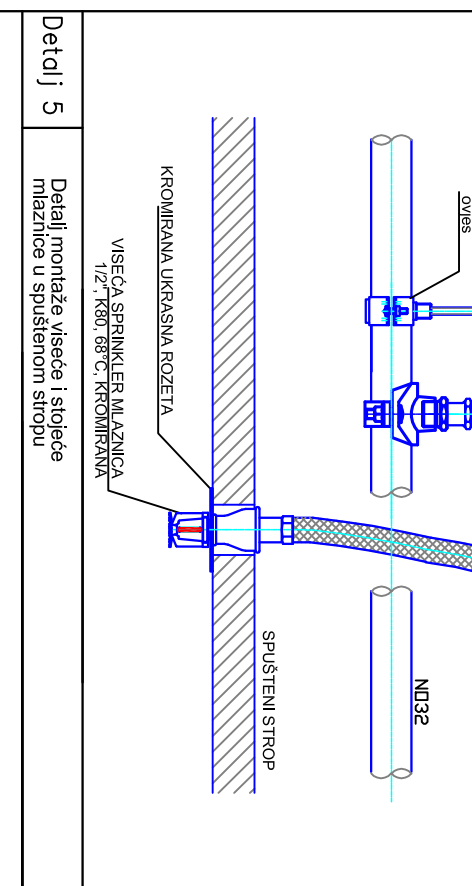
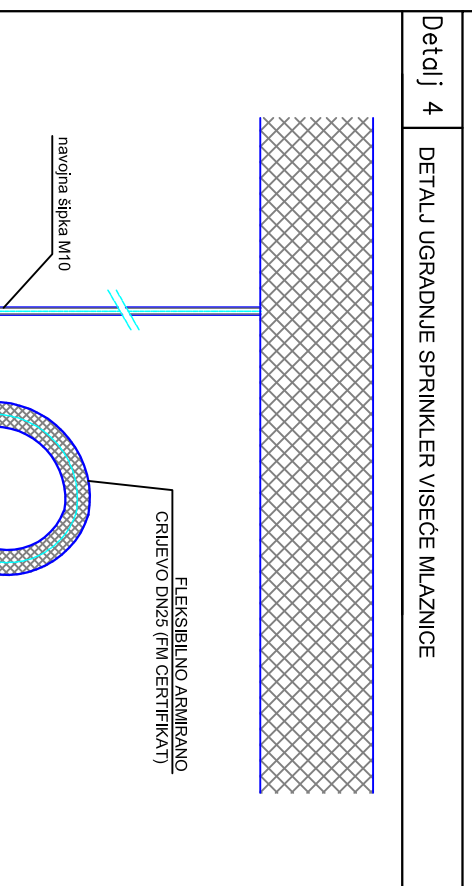
Detalj 2 - Detalj ulazne spojnice



Maksimalna brzina vjetrova i brzina				
Temperatura vode (t) [°C]	Brzina vjetrova (v) [m/s]	Brzina (v) [km/h]	Brzina (v) [mi/h]	Brzina (v) [mph]
10	1	3.6	2.2	1.4
15	1.5	5.4	3.3	2.1
20	2	7.2	4.5	2.8
25	2.5	9.0	5.6	3.5
30	3	10.8	6.7	4.2
35	3.5	12.6	7.8	4.9
40	4	14.4	9.0	5.6
45	4.5	16.2	10.1	6.3
50	5	18.0	11.2	7.0
55	5.5	19.8	12.3	7.7
60	6	21.6	13.4	8.4
65	6.5	23.4	14.5	9.1
70	7	25.2	15.6	9.8
75	7.5	27.0	16.7	10.5
80	8	28.8	17.8	11.2
85	8.5	30.6	18.9	11.9
90	9	32.4	20.0	12.6
95	9.5	34.2	21.1	13.3
100	10	36.0	22.2	14.0



Maksimalna brzina vjetrova i brzina					
Temperatura vode (t) [°C]	Brzina vjetrova (v) [m/s]	Brzina (v) [km/h]	Brzina (v) [mi/h]	Brzina (v) [mph]	Brzina (v) [mph]
A	7	25.2	15.6	9.8	11.2
B	8	28.8	17.8	11.2	12.6
C	9	32.4	20.0	12.6	14.0
D	10	36.0	22.2	14.0	15.4
E	11	39.6	24.5	15.4	16.8
F	12	43.2	26.8	16.8	18.2
G	13	46.8	29.1	18.2	19.6
H	14	50.4	31.4	19.6	21.0
I	15	54.0	33.7	21.0	22.4
J	16	57.6	36.0	22.4	23.8
K	17	61.2	38.3	23.8	25.2
L	18	64.8	40.6	25.2	26.6
M	19	68.4	42.9	26.6	28.0
N	20	72.0	45.2	28.0	29.4
O	21	75.6	47.5	29.4	30.8
P	22	79.2	49.8	30.8	32.2
Q	23	82.8	52.1	32.2	33.6
R	24	86.4	54.4	33.6	35.0
S	25	90.0	56.7	35.0	36.4
T	26	93.6	59.0	36.4	37.8
U	27	97.2	61.3	37.8	39.2
V	28	100.8	63.6	39.2	40.6
W	29	104.4	65.9	40.6	42.0
X	30	108.0	68.2	42.0	43.4
Y	31	111.6	70.5	43.4	44.8
Z	32	115.2	72.8	44.8	46.2
AA	33	118.8	75.1	46.2	47.6
AB	34	122.4	77.4	47.6	49.0
AC	35	126.0	79.7	49.0	50.4
AD	36	129.6	82.0	50.4	51.8
AE	37	133.2	84.3	51.8	53.2
AF	38	136.8	86.6	53.2	54.6
AG	39	140.4	88.9	54.6	56.0
AH	40	144.0	91.2	56.0	57.4
AI	41	147.6	93.5	57.4	58.8
AJ	42	151.2	95.8	58.8	60.2
AK	43	154.8	98.1	60.2	61.6
AL	44	158.4	100.4	61.6	63.0
AM	45	162.0	102.7	63.0	64.4
AN	46	165.6	105.0	64.4	65.8
AO	47	169.2	107.3	65.8	67.2
AP	48	172.8	109.6	67.2	68.6
AQ	49	176.4	111.9	68.6	70.0
AR	50	180.0	114.2	70.0	71.4
AS	51	183.6	116.5	71.4	72.8
AT	52	187.2	118.8	72.8	74.2
AU	53	190.8	121.1	74.2	75.6
AV	54	194.4	123.4	75.6	77.0
AW	55	198.0	125.7	77.0	78.4
AX	56	201.6	128.0	78.4	79.8
AY	57	205.2	130.3	79.8	81.2
AZ	58	208.8	132.6	81.2	82.6
BA	59	212.4	134.9	82.6	84.0
BB	60	216.0	137.2	84.0	85.4
BC	61	219.6	139.5	85.4	86.8
BD	62	223.2	141.8	86.8	88.2
BE	63	226.8	144.1	88.2	89.6
BF	64	230.4	146.4	89.6	91.0
BG	65	234.0	148.7	91.0	92.4
BH	66	237.6	151.0	92.4	93.8
BI	67	241.2	153.3	93.8	95.2
BJ	68	244.8	155.6	95.2	96.6
BK	69	248.4	157.9	96.6	98.0
BL	70	252.0	160.2	98.0	99.4
BM	71	255.6	162.5	99.4	100.8
BN	72	259.2	164.8	100.8	102.2
BO	73	262.8	167.1	102.2	103.6
BP	74	266.4	169.4	103.6	105.0
BQ	75	270.0	171.7	105.0	106.4
BR	76	273.6	174.0	106.4	107.8
BS	77	277.2	176.3	107.8	109.2
BT	78	280.8	178.6	109.2	110.6
BU	79	284.4	180.9	110.6	112.0
BV	80	288.0	183.2	112.0	113.4
BW	81	291.6	185.5	113.4	114.8
BX	82	295.2	187.8	114.8	116.2
BY	83	298.8	190.1	116.2	117.6
BZ	84	302.4	192.4	117.6	119.0
CA	85	306.0	194.7	119.0	120.4
CB	86	309.6	197.0	120.4	121.8
CC	87	313.2	199.3	121.8	123.2
CD	88	316.8	201.6	123.2	124.6
CE	89	320.4	203.9	124.6	126.0
CF	90	324.0	206.2	126.0	127.4
CG	91	327.6	208.5	127.4	128.8
CH	92	331.2	210.8	128.8	130.2
CI	93	334.8	213.1	130.2	131.6
CJ	94	338.4	215.4	131.6	133.0
CK	95	342.0	217.7	133.0	134.4
CL	96	345.6	220.0	134.4	135.8
CM	97	349.2	222.3	135.8	137.2
CN	98	352.8	224.6	137.2	138.6
CO	99	356.4	226.9	138.6	140.0
CP	100	360.0	229.2	140.0	141.4



- ### LEGENDA
- SPRINKLER IZ MLAZNICA VISEĆA I SZREZTOI KA-80 68°C
  - SPRINKLER IZ MLAZNICA STOEĆA KA-60 68°C
  - SPRINKLER IZ MLAZNICA VISEĆA KA-80 93°C (STOEĆA (uključujući stropni)) KA-80 68°C
  - SPRINKLER IZ MLAZNICA VISEĆA KA-80 93°C (uključujući stropni) KA-80 68°C
  - SPRINKLER IZ MLAZNICA VISEĆA I STOEĆA (uključujući stropni) KA-80 68°C
  - SPRINKLER IZ MLAZNICA STOEĆA KA-80 93°C
  - SPRINKLER IZ MLAZNICA STOEĆA KA-80 93°C
  - SP/OP ZA OPŠTI KONSTRUKCIJSKI IZ OBRATNE INSTALACIJE
  - PRILJUČAK ZA SPRINKLER IZ OBRATNE INSTALACIJE (UKLJUČUJUĆI OBRATNE 60x80) 60x80
  - SP/OP ZA SPRINKLER KONSTRUKCIJSKI IZ OBRATNE INSTALACIJE
  - DNKAKA

**SPRINKLER d.o.o.**

MEŠALIT d.o.o. Solin  
 Obr: 672198389  
 OIB: 672198389

UL. Bartuli, Mladost, Zagreb, Hrvatska  
 10000 Zagreb, Hrvatska

Telefon: +385 1 3822 802  
 Fax: +385 1 3822 800  
 E-mail: sprinkler@sprinkler.hr

Investitor: MEGALIT d.o.o. Solin

Projektant: SPRINKLER d.o.o. Solin

Objekt: ZAMENSKA GRADJEVINA - TROJNOJAKI CENTAR

Adresa: Ul. Bartuli, Mladost, Zagreb, Hrvatska  
 10000 Zagreb, Hrvatska

Datum: 11.2014.

Faza: Glavni projekt

Skala: 1:100

Stupeanj: 7

Ime projekta: DISPOZICIJA SPRINKLER INSTALACIJE SUTEREN

Ime autora: 418-14